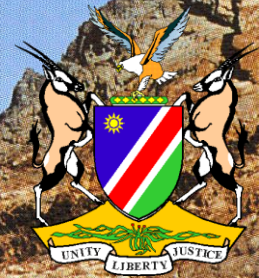


***GSN***

*GEOLOGICAL SURVEY OF NAMIBIA*



# **GONDWANALAND GEOPARK -A PROPOSED GEOPARK FOR NAMIBIA-**

**GIC SCHNEIDER**

**GEOLOGICAL SURVEY OF NAMIBIA**

*EARTH SCIENCES FOR NAMIBIA'S SUSTAINABLE DEVELOPMENT*



# ***GSN***

A photograph of a rugged, mountainous landscape in Namibia. The terrain is characterized by layered, reddish-brown rock formations and deep, winding valleys. In the foreground, a person is standing on a rocky outcrop, looking out over the vast landscape. The sky is clear and blue.

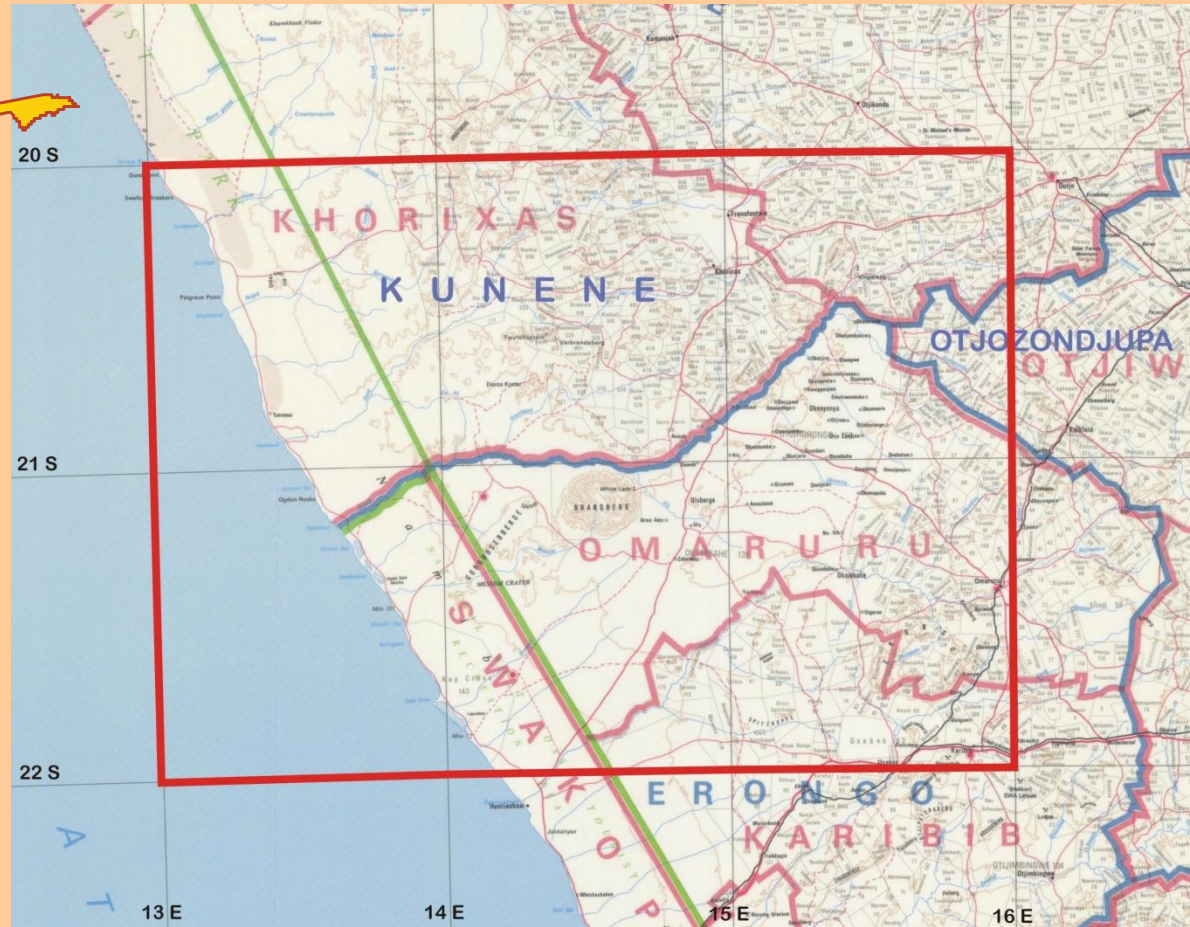
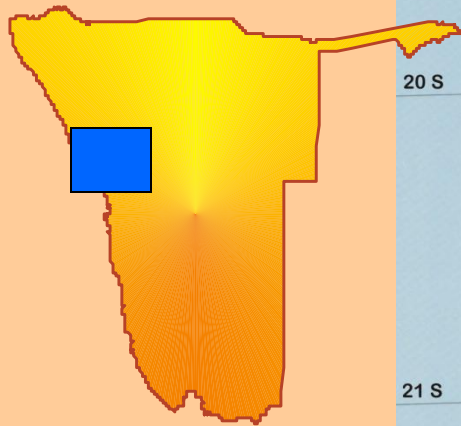
***GEOLOGICAL SURVEY OF NAMIBIA***

Namibia's spectacular landscapes and the geological history of its rocks, minerals, fossils and landscapes are of unique geological importance and constitute a significant geological heritage.

***EARTH SCIENCES FOR NAMIBIA'S SUSTAINABLE DEVELOPMENT***



Some 60 000 km<sup>2</sup> in central western Namibia



## **SCENIC LANDFORMS**





## PALAEONTOLOGICAL AND ARCHAEOLOGICAL SITES



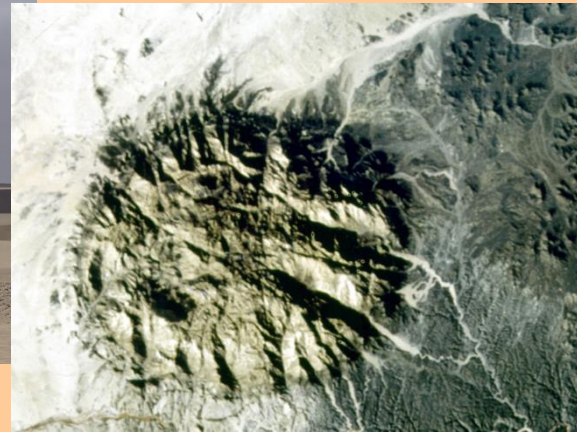


## **RARE MINERALS AND ROCKS**



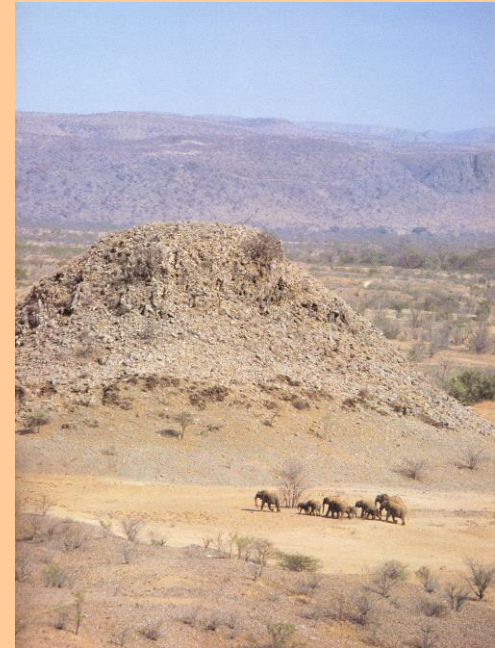


## **GEOMORPHOLOGICAL PROCESSES**

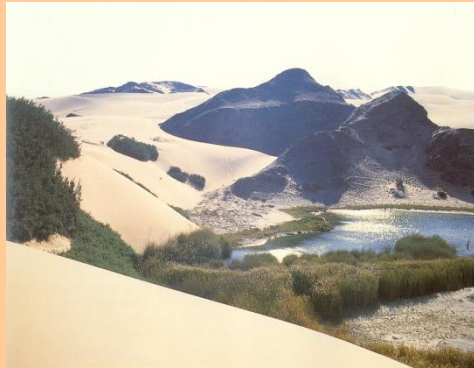




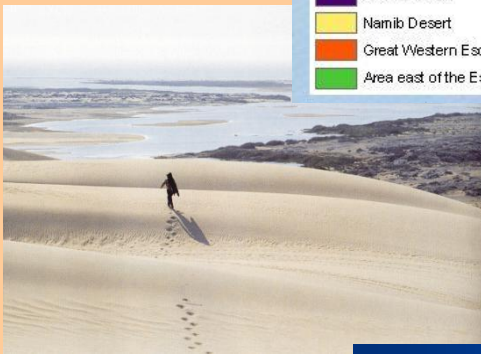
**Geological aspects are combined with ecological biodiversity of scientific and cultural significance and with cultural and historical aspects**







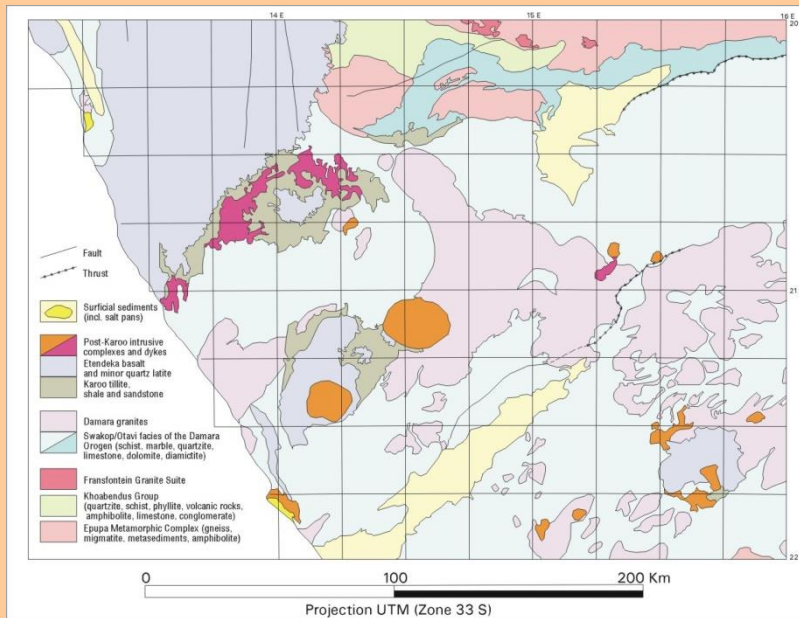
- Atlantic Coast
- Namib Desert
- Great Western Escarpment
- Area east of the Escarpment



## LANDSCAPES



### GEOLOGY





# **GSN**

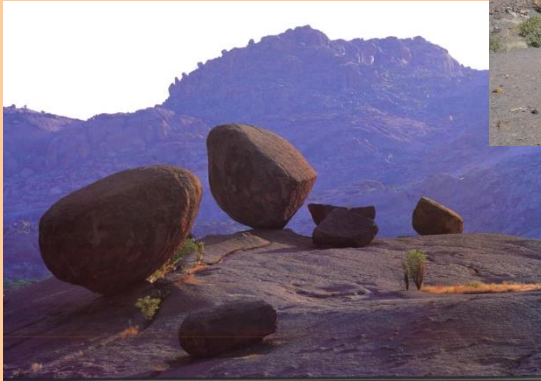
*GEOLOGICAL SURVEY OF NAMIBIA*

## **GEOLOGICAL ATTRACTIONS**



*EARTH SCIENCES FOR NAMIBIA'S SUSTAINABLE DEVELOPMENT*

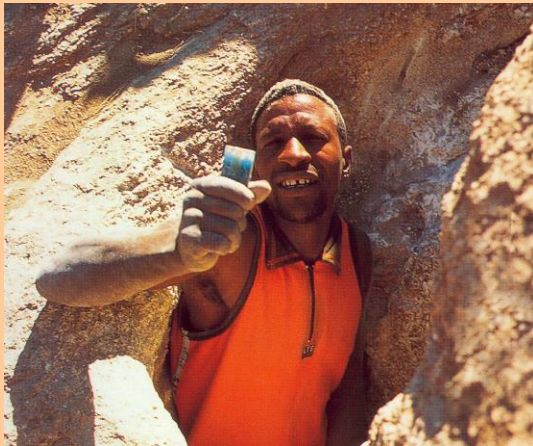




## **GEOLOGICAL ATTRACTIONS**



## **MINERALS AND GEMSTONES**



**Tourmaline**  
**Aquamarine**  
**Dumortierite**  
**Garnet**  
**Pyrophyllite**  
**Rock crystal**  
**Amethyst**  
**Smoky quartz**  
**Rose quartz**  
**Agate**  
**Topaz**  
**Jeremejevite**  
**Zeolites**

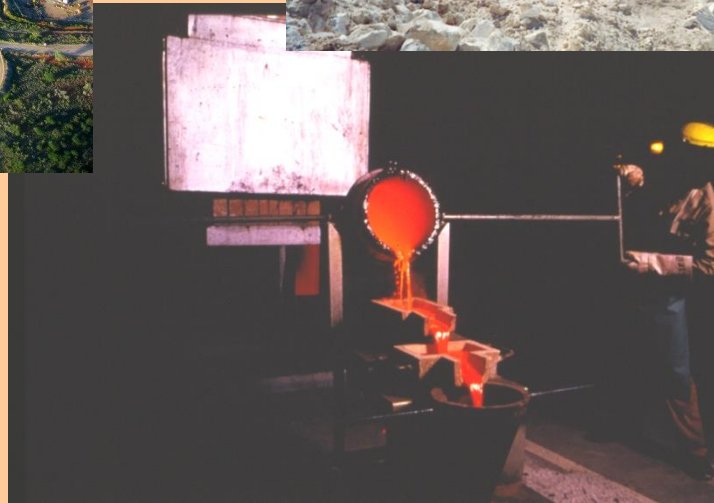
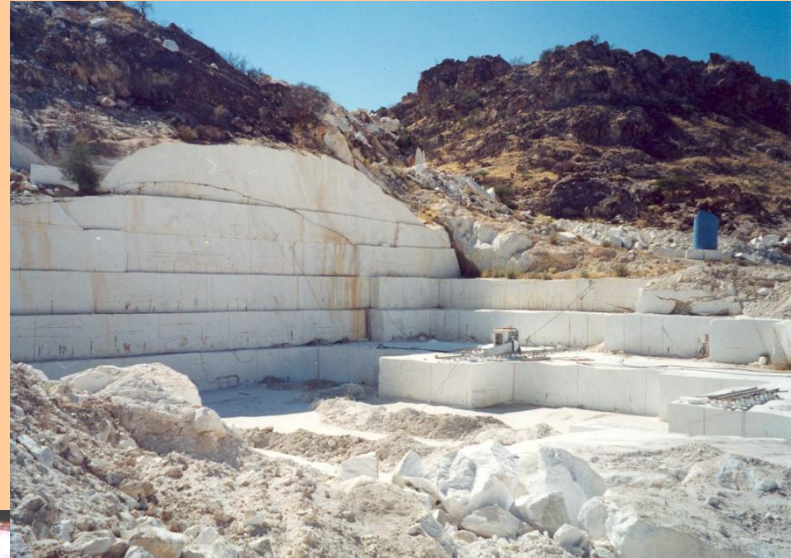


## HISTORICAL MINING



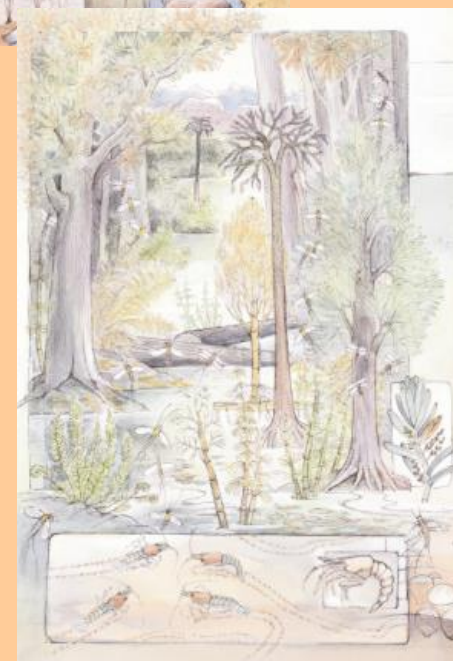
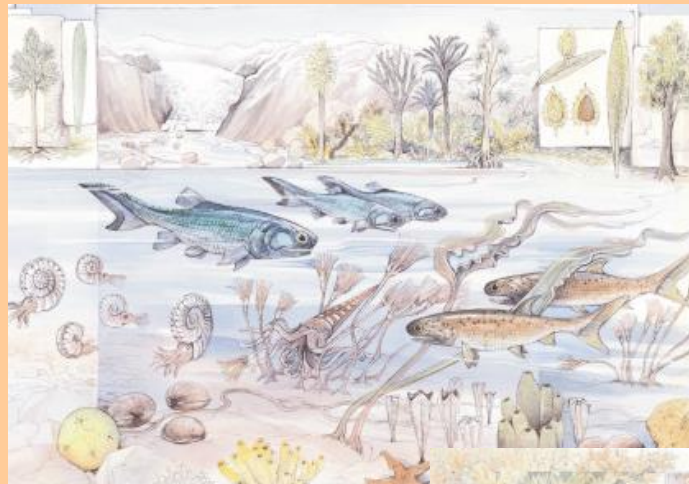


## **CURRENT MINING**





## PALAEONTOLOGY





## **FAUNA AND FLORA**





## PROCLAIMED NATIONAL MONUMENTS AND CULTURAL SITES





# GSN

*GEOLOGICAL SURVEY OF NAMIBIA*

## INFRASTRUCTURE



*EARTH SCIENCES FOR NAMIBIA'S SUSTAINABLE DEVELOPMENT*



## **SOCIO-ECONOMIC ASPECTS**

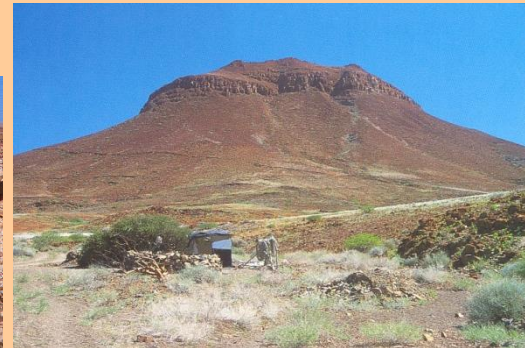
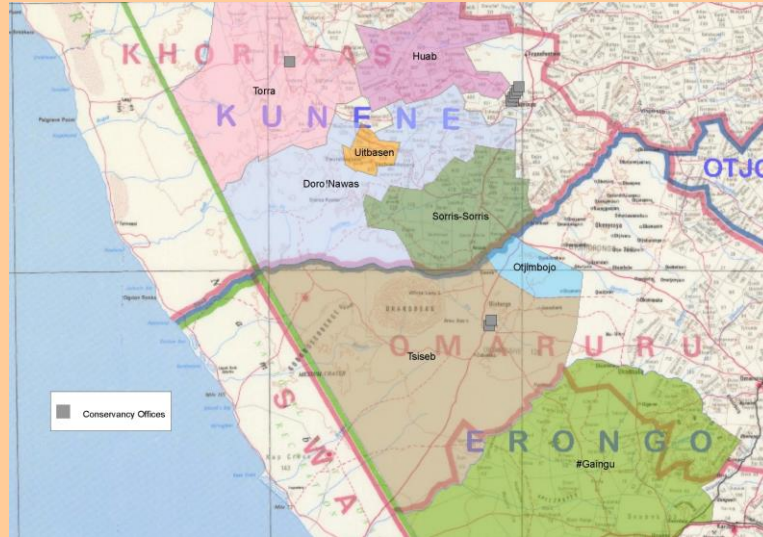
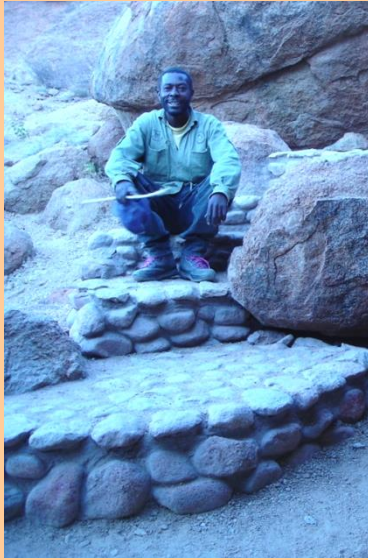
**No businessman, politician or social activist can deny that the greatest issues of the day are global poverty and inequity. These are becoming the engines for environmental destruction, as globalization creates heightened expectations everywhere.**

*Tim Smit, Eden Project*





## SOCIO-ECONOMIC ASPECTS





# **LEGISLATION AND PROPOSED ADMINISTRATION**

**Parks and Wildlife Bill/ Nature Conservation  
Ordinance**

**Ministry of Environment and Tourism  
in cooperation with the Geological Survey of Namibia**

**Namibian Geopark Advisory Board:**

**Local communities and conservancies**

**Local government authorities**

**NGOs**

**Farming community**

**Tourism industry**

**Mining companies**

**National Heritage Council**

**Professional societies**



## **What hurdles are in the way?**

- \* Many sites in the proposed park do not yet have conservation status**
- \* Legislation is not yet in place**
- \* No broad awareness of the concept of geological heritage conservation**

- \* Lack of staff in relevant organisations**
- \* Problems with disbursement**



## **BENEFITS EXPECTED FROM THE PROPOSED GEOPARK**

- \* **Conservation of important sites**
- \* **Recognition of the relationship between people and geology**
- \* **Public education and knowledge transfer**
- \* **Marketing of geotourism destinations and related socio-economic development**
- \* **Development of a national identity based on the natural environment**
- \* **Public relations and promotion for Geoscience institutions**



## WHAT DO WE STAND TO GAIN?

- \* Increased tourism
- \* Control and therefore sustainability of the Small Scale Mining Sector
- \* Employment opportunities for local communities
- \* Better returns for small scale mineral specimen miners
- \* Increased awareness of the geo-environment amongst Namibians
- \* Better protection of endangered sites



## ACTIVITIES UNDER THE MDGF JP

- \* **Compilation of a Management Plan for the Geopark**
- \* **Design of Corporate Identity and Texts for Information Boards and Production of Promotional Material (incl. Heritage Map)**
- \* **Architectural design for an information centre and provision of infrastructure for selling of minerals by small scale miners**
- \* **Convening of needs assessment workshop**
- \* **Design of training materials for future tour guides and HIV/AIDS campaign**



## **THE WAY FORWARD...**

- \* Securing of participatory representation from all sections of the community**
- \* Awareness programmes for locals and visitors**
- \* Lobbying of politicians and communities and proclamation of the Geopark**
- \* Fund raising**
- \* Submission of Nomination Form to UNESCO**





# ***GSN***

***GEOLOGICAL SURVEY OF NAMIBIA***

**To know where  
we are going, we  
need to know where  
we come from**

***Thank you!***

***EARTH SCIENCES FOR NAMIBIA'S SUSTAINABLE DEVELOPMENT***